



**Shropshire, Telford
and Wrekin**
Clinical Commissioning Group

Eye Care Transformation



Introduction and Overview

Welcome

Recording the session

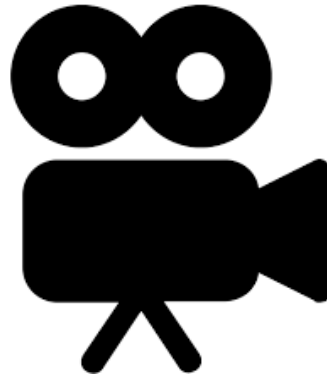
Purpose of the workshop

Introductions and why have you chosen to come along today?

Housekeeping



Please keep your microphone muted during the presentations



We are recording the session today



You can type any questions you have into the chat feature or raise your hand and we will answer them when we can

What's coming up

About sight loss in Shropshire, Telford and Wrekin

The case for change

Your chance to ask us questions

Tell us about current services

Let's talk about future services

Summary and next steps

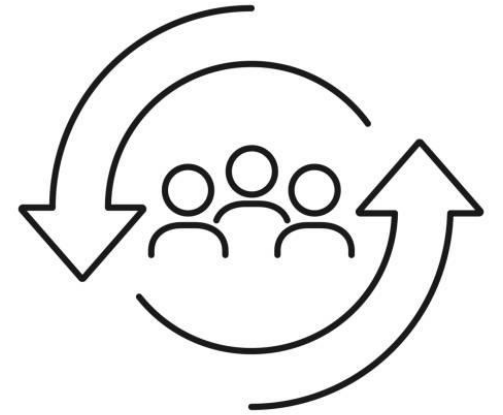
Eye disease in Shropshire, Telford and Wrekin

- 1 in 5 living with sight loss are over 75, which rises to 1 in 2 over the age of 90. The number of people over 65 in Shropshire, Telford and Wrekin is above the national average. Across the UK it is predicted that sight loss will increase by 50% by 2050.
- Evidence shows there is a link between people on low incomes or living in deprivation and people living with site loss. Levels of deprivation across the County vary, with areas in the 10% most deprived nationally and the most affluent. Residents in high areas of deprivation are more likely to suffer from health issues related to smoking and obesity. In Telford and Wrekin 65.6% of the adult population are overweight or obese, In Shropshire this rises to 70.3%
- A blend of rural and town centre areas throughout the county mean some services can be difficult to access for certain populations, leading to an increased risk of developing eye disease.
- A range of eye care providers are used within the hospital and community settings – ensuring joined up services will help people on their eye care journey.

Main eye conditions causing sight loss and anticipated increase between 2016-2030

Eye Condition	% increase in Shropshire	% increase in Telford and Wrekin
Age related macular degeneration	59.1%	65%
Cataract requiring surgical treatment	56.9%	61.9%
Glaucoma	9.8%	7.7%
Diabetic retinopathy	6.5%	4.2%

Case for Change



- Anticipating the increasing need for services
- Importance of early detection and prevention
- More joined up services across primary, secondary and community care
- Providing more services closer to home, when its needed
- Making better use of new technologies and developments in eye care

- Is there anything else we need to think of?

Questions so far?

Session 1: current services

Thinking about your own experience of eye care services in Shropshire, Telford and Wrekin, within the last 3 years:

- What was good, that we need to make the most of?
- What could have been better, and how?
- Is there anything else you would like to tell us about your experience?

Reflecting back

What does the group feel are the main themes from the discussion about current eye care services?

5 Minute break

Session 2: future services

Thinking about the future of eye care services:

- What are the really important things that you think we need to consider?
- When we have discussions with the clinical teams, what would you like us to say to them, to help them think about designing future services?

- Anything else you would like to add?

Reflecting back

What does the group feel are the main themes from the discussion that we need to consider for future eye care services?

To conclude

- What you've told us and what we've heard
- Next Steps
 - Further feedback opportunity via the survey (link in the chat)
 - Clinical Engagement session planned for the 31st March
- How would you like to be kept up to date?
- If you have anything further to add, please email: lucy.jones17@nhs.net

Thank you for your input